

canvas & i>clicker®

This handout will show students how register their i>Clicker for a course in Canvas.

Contents

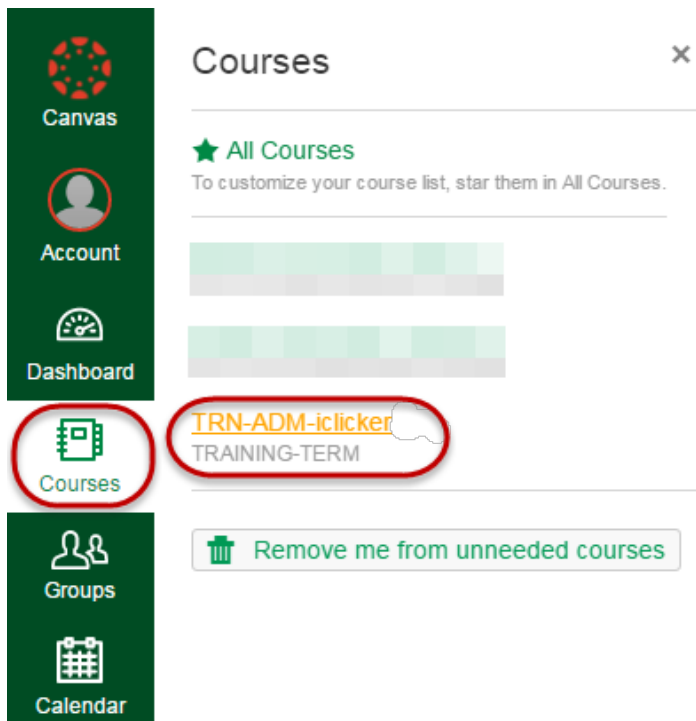
Student i>Clicker Registration.....	2
Setting the i>Clicker Frequency	4
i>Clicker Resources	4

Student i>Clicker Registration

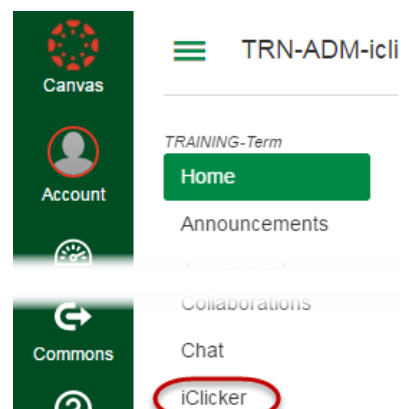
All i>Clicker's that are being used within Canvas, must be registered within a Canvas. When an i>Clicker has been registered once in Canvas, it will be registered for all CSU courses taught in Canvas.

Please use either FireFox or Chrome when registering an iClicker.

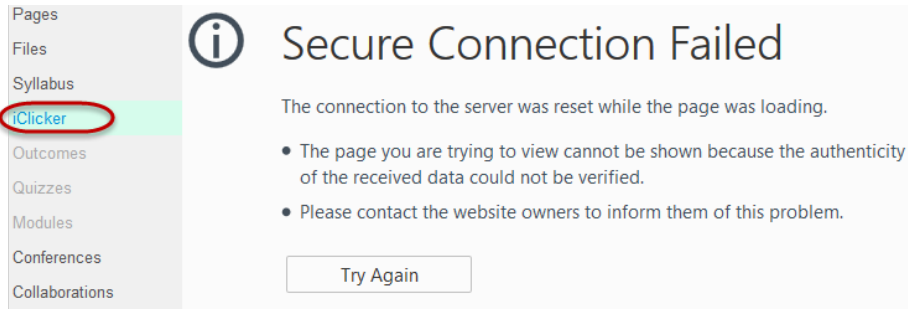
1. Log in to Canvas at canvas.colostate.edu
2. Enter eName and ePassword
3. Select a course that is using i>Clicker by clicking on the Courses tab and selecting the appropriate course.



4. On the left side, click on the iClicker Index Page.
 - a. **NOTE:** If the iClicker Index Page is not visible on the left side in the course, contact the Instructor. Also, this may not be in the exact location as shown on the left.

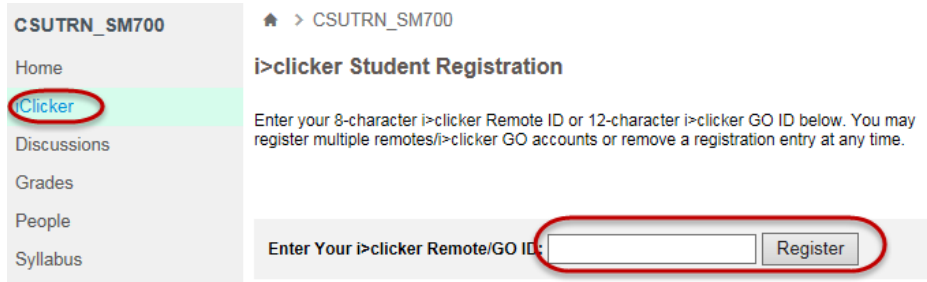


5. If a Secure Connection error appears after clicking on the iClicker Index Page, please try clicking on the iClicker Index Page again



If any assistance is needed with registration, please contact CanvasHelp@colostate.edu

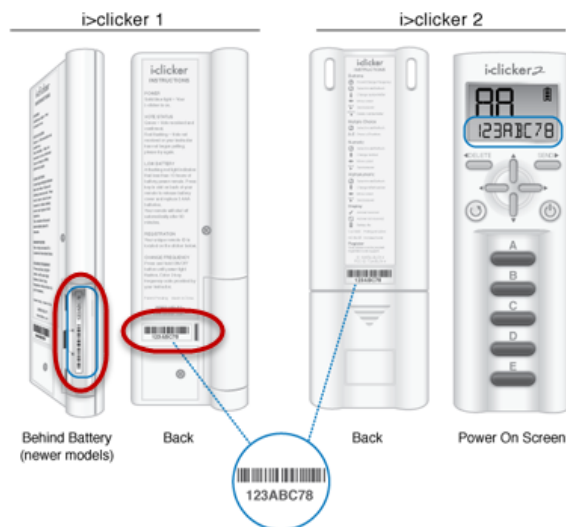
6. Enter in the i>Clicker remote ID.



- a. The ID is the 8-character code below the barcode

▼ [Where do I find my remote ID?](#)

Your i>clicker remote ID is printed on a sticker located on the back of your remote. The ID is the 8-character code below the barcode. Newer original i>clicker remotes have a secondary ID location behind the battery compartment and i>clicker 2 remotes display the ID upon power up. The remote ID will only contain letters A-F and numbers 0-9.



7. If the registration was successful, the remote ID, along with the date registered below.

i>clicker Student Registration

Enter your 8-character i>clicker Remote ID or 12-character i>clicker GO ID below. You may register multiple remotes/i>clicker GO accounts or remove a registration entry at any time.

Enter Your i>clicker Remote/GO ID:

i>clicker ID	Date Registered	
	May-06-2015	Remove

Setting the i>Clicker Frequency

For an i>Clicker to be used in a classroom, the i>Clicker frequency must be set to the frequency code that is specific to the classroom where the i>Clicker is being used. If i>Clicker is being used in a classroom, there should be a sign hanging in the classroom indicating the frequency code for that room. If users do not see a sign, please ask the Instructor for the frequency code.

Follow this link for instructions on [how to set the frequency code](#) on an i>Clicker remote.

i>Clicker Resources

- [CSU's i>Clicker site](#)